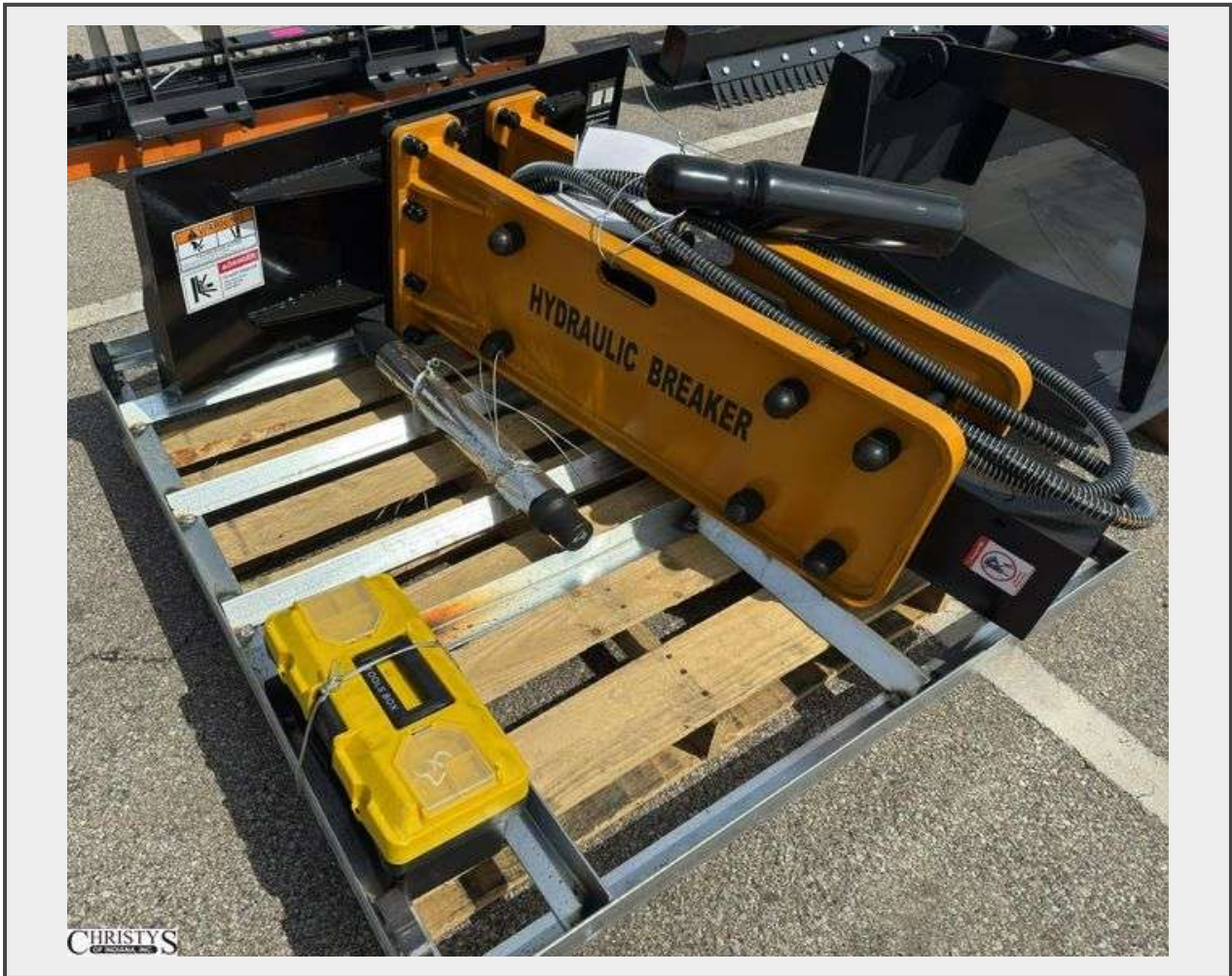


Sale Name: July Vehicle And Equipment Auction

LOT 126 - 2025 Wolverine Concrete Breaker CB-11-750F



Description

Unused 2025 Skid Steer Concrete Breaker Attachment Impact Energy Class:750 ft lb
Operating Weight:1230 lbs Length With Tool:69 in Overall Width :51 in Working Steel
Diameter:2.67 in Blows Per Minute (variable):620 - 1150 Oil Flow Range:11.9 - 21.9
gpm Operating Pressure Range:1,566 - 3000 psi Relief Pressure:2,310 - 2,610 psi

Quantity: 1

CHRISTY'S
OF INDIANA, INC.

<https://bids.christys.com/>